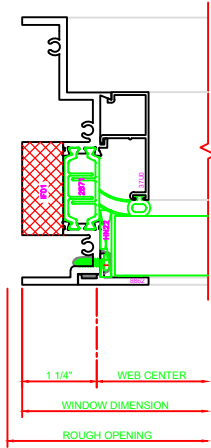


**443 JAMB**  
 SERIES: 450X  
 CASEMENT OUT  
 4-BAR ARMS

**444 JAMB**  
 SERIES: 450X  
 CASEMENT OUT

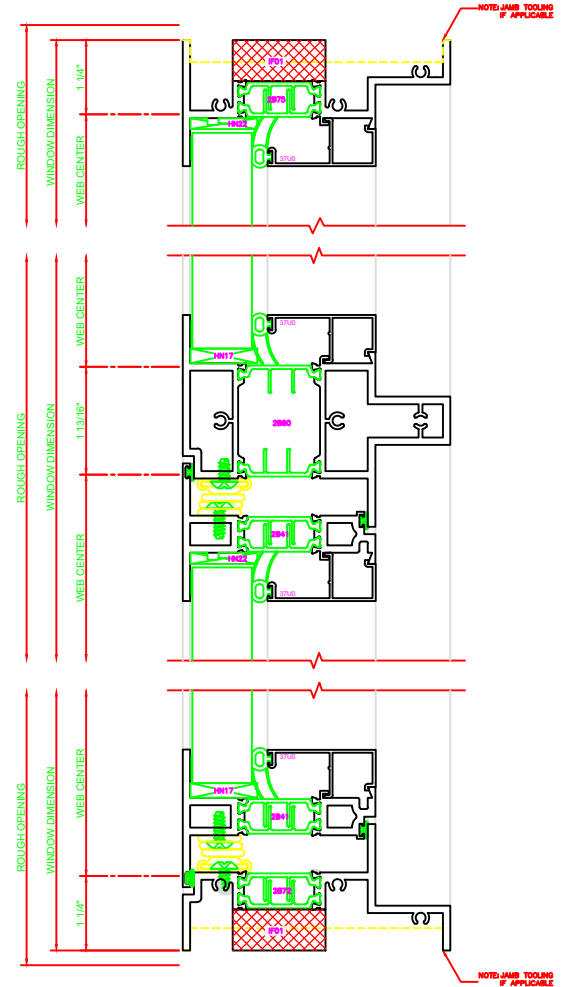


**403 JAMB**  
 SERIES: 450X  
 FIXED

**100 HEAD**  
 SERIES: 450X  
 FIXED

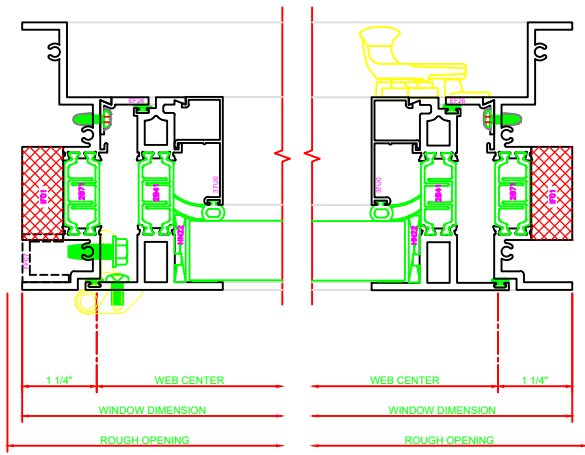
**544 MEETING RAIL**  
 SERIES: 450X  
 FIXED/C.O.  
 4-BAR ARMS

**240 SILL**  
 SERIES: 450X  
 CASEMENT OUT  
 4-BAR ARMS



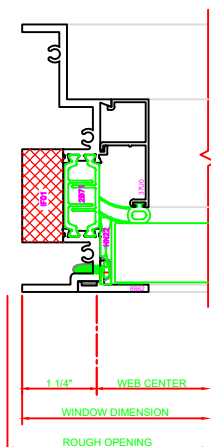
## 4-BAR ARMS BUTT HINGE

**13 ERECTOR NOTE:**  
 THE HINGED JAMB FRAME SHALL BE  
 INSTALLED PLUMB. ALL HINGES SHALL  
 BE SECURELY BLOCKED AND  
 ANCHORED TO THE CONDITION  
 THROUGH THE HINGES OR AS CLOSE  
 AS POSSIBLE TO THE HINGES.



**445 JAMB**  
 SERIES: 450X  
 CASEMENT OUT  
 BUTT HINGE

**444 JAMB**  
 SERIES: 450X  
 CASEMENT OUT



**403 JAMB**  
 SERIES: 450X  
 FIXED

**100 HEAD**  
 SERIES: 450X  
 FIXED

**545 MEETING RAIL**  
 SERIES: 450X  
 FIXED/C.O.  
 BUTT HINGE

**241 SILL**  
 SERIES: 450X  
 CASEMENT OUT  
 BUTT HINGE

